

NES—DC—USA

# Dr. CHAOS





---

Please read this instruction booklet  
to insure proper handling of your new game;  
then save the booklet for future reference.

---

### Precautions

1. This is a high precision game. It should not be played or stored in places that are very hot or cold. Never hit it or drop it.
2. Avoid touching the connectors. Do not get them wet or dirty. Doing so may damage the game.
3. Do not clean with benzene, paint thinner, alcohol or other such solvents.

Nintendo and Nintendo Entertainment System® are trademarks of Nintendo of America Inc. Dr. Chaos™ is a trademark of Fujisankei Communications International, Inc. and is licensed for play on the Nintendo Entertainment System®.



This official seal is your assurance that Nintendo® has reviewed this product and that it has met our standards for excellence in workmanship, reliability and entertainment value. Always look for this seal when buying games and accessories to ensure complete compatibility with your Nintendo Entertainment System®.

Licensed by Nintendo  
for play on the



## **Dr. Chaos Story**

It had been three months since Michael last heard from his brother. He grew impatient as he waited for his letter.

He waited for another month, but to no avail. With some concern Michael began to suspect that something had happened to him.

Michael's brother, Doctor Ginn Chaos, was a genius in physics specializing in warp zones. He knew that the experiment on warp zones could bring hazardous results, so he conducted research alone at his lab in a remote village.

He sent Michael a research report every month. According to the last report, Dr. Chaos had succeeded in creating warp zones. He seemed to have continued his research on the effects of such space on a living body.

Michael decided to go to his brother's lab. The lab stood in a quiet setting, but it didn't look like anything existed inside.

Gathering his courage, Michael stepped inside the house. In the silent hallway, he saw only rats and bats. On a desk near the doorway he found his brother's diary. On the last page he read:

*"Month \_\_\_\_ Day \_\_\_\_:*

*I made a great mistake. I overlooked the effect of warp zones on living organisms. It was too late when I realized this. The living things in the warp zone*

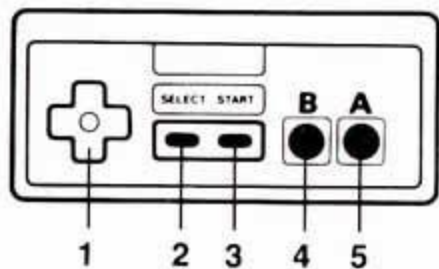
*had grown so big that they began to take over my house. The warp zone can swallow you up at any time. Open one of the doors to the warp zone and you will be attacked by these monsters. I have been trying to invent machines to stop the monsters but I am not sure if I still have time. My brother Michael, if you happen to read this diary, you are the only one who can stop this situation."*

Michael searched for the machines, but could not find them. The monsters coming out of the warp zones must have grabbed them away. He had to do something about this before someone fell victim to the monsters. With a knife in his hand, Michael kicked open the door....

## Names of Controller Parts and Operating Instructions

Do not use Controller 2, as this game is designed for a single player only.

- 1 CONTROL Pad
- 2 SELECT Button
- 3 START Button
- 4 B Button
- 5 A Button



### When you are in the Hallway or the Warp Zones

A Button: *Jump*—Michael jumps

B Button: *Attack*—Michael attacks with weapons you select


SELECT: You select the weapon

START: You can pause the game

CONTROL: *Moves Michael.* When you push this button in front of a door, Michael moves into the room screen

### When you are in the Rooms

A Button: After you move the cursor on the menu, use A to activate the menu.

B Button: While pressing B, move Button  up and down. Selects commands from the menu.

CONTROL: *Moves the hand.* This button will move the hand on to a new room. When you press B at the same time, you can choose COMMANDS on the MENU by moving it up and down.


GAME OVER

● CONTINUE

PASSWORD

## How to Play

### To Begin the game

- Push the START button.
- NEW GAME and CONTINUE will appear.
- When you start the game for the first time, move the cursor to NEW GAME and push button A or B. If you want to continue the previous game, move the cursor to CONTINUE and push button A or B.
- If you select CONTINUE, input the password you recorded from the previous game. (Select the password with button , and push button A.)

## **To Discontinue the Game**

- Push the START button, then push button A or B.  
The password will appear on the screen. Write down the password so you can continue the game later.  
Turn off the power.

## **When You Knock Down the Final Monster in the Warp Zone**

- When you knock down the “Boss” (the final warp zone monster), a PARTS BOTTLE will appear. Gather the parts to build your Restored Laser. The password will be exhibited on the screen. Jot it down for your record. Now, push the SELECT button.  
The game is resumed again.

Michael's LIFE diminishes each time he is attacked by enemies. When LIFE reaches ZERO, Michael dies—and the game ends. Two different commands, CONTINUE and PASSWORD appear on the screen.

If you move the cursor to CONTINUE and push button A or B, you can immediately resume the challenge from the beginning (e.g., the entrance of the hallway) but you will not be able to use the items you have gathered in the previous game.

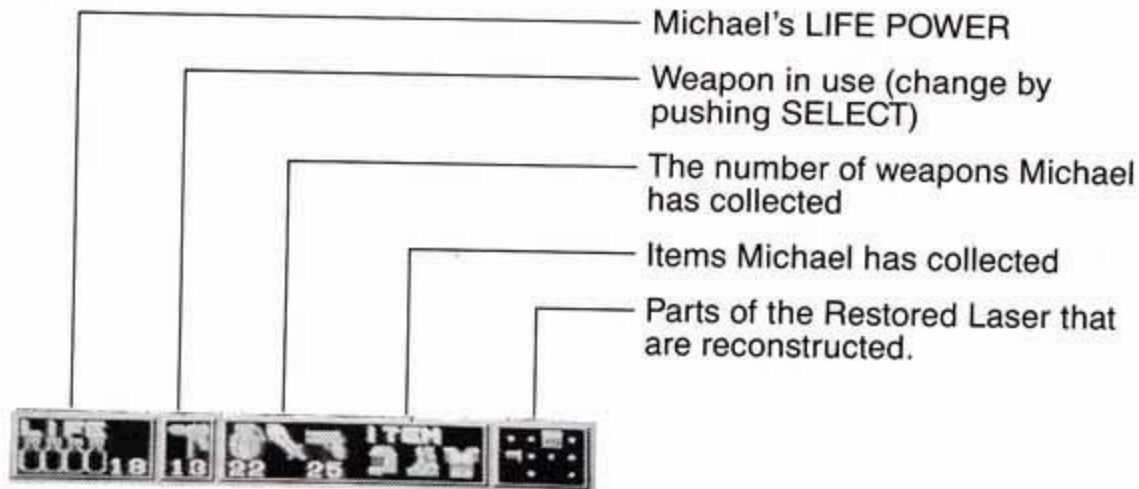
If you move the cursor to PASSWORD and push button A or B, the password is automatically input and will appear on the screen. Write it down so you can continue the game later. Be aware though, that not all of the items you have gathered will be saved.

## Then Michael Steps Into the House...

In order to save Dr. Chaos, Michael has to collect many items, find the secret warp zone, and destroy the monsters there. First, Michael must search the rooms.

### Screen Display

As the picture shows, you can see Michael's condition displayed on the upper part of the screen. Remember to pay attention to these displays.






## This Game Consists of Three Screens





### 1 Hallway Screen

The screen shows the hallway lined with doors to each room. The house has three floors and a basement. There is a stairway from the first floor to the second. If you need to go to the third floor, or to the basement, you have to find another way to do it.

If you want to enter the room, push up on button  in front of the door.

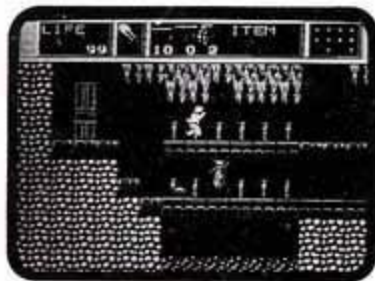


### 2 Room Screen

This screen indicates the location of the room. The room consists of four panels of East, West, North and South. When Michael enters the room, the hand (icon) appears. You can move the icon by pushing button . If you try to move the icon beyond the edge of the screen, it changes the direction it faces. Select COMMAND by moving button  up and down, while pressing button B. Push button A to activate commands.

On the Room Screen, you have to find weapons, medicines for Michael to recover energy, and entrances

to the warp zones. When a monster jumps out of an open door, Michael is automatically thrown out into the hallway, where he has to fight the monster. (He cannot go back to the room once the battle starts.)

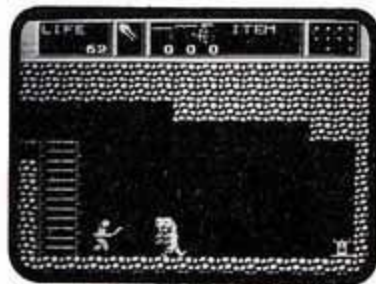


### 3 Warp Screen

In the rooms, you can find hidden entrances to the warp zone. There are more monsters on the warp screen than on any other screen and they are stronger than any of the other monsters in the game.

## Here Come the Monsters! How to Attack Them

You can only attack monsters on the hallway screen or the warp screen. Choose a weapon by pushing SELECT. Attack using button B. At the end of the warp zone, even more ferocious monsters appear. These monsters cannot be attacked in the same way as the others.



## Characters



### Mouse

Appears in the hallway.  
Creeps on the ground.  
Not powerful, but fast.



### Vampire Bat

Appears in the hallway.  
Flies in the air. Not a  
powerful attacker.



### Smork

Appears in the hallway.  
Moves while spinning  
quickly. Doesn't have  
attacking power.



### Big Lady

Appears in the room.  
Rushes up and attacks  
Michael. Once she  
catches him, he cannot  
easily escape.



### Omen

Jumps and follows  
Michael. Relatively easy  
to attack. Has some  
attacking power.



### Franken

The most powerful mon-  
ster outside of the warp  
zone monsters. Has high  
level of life energy and  
attacking power. Once it  
appears, it warps the  
space and deters  
Michael's movement.

## Characters (Warp Zone)



### Slime

Appears in the warp zone. Not strong.



### Flying Skeleton

Skeleton bird flies in the warp zone. Moves swiftly. Difficult to attack.



### Skull

Appears in the warp zone. They move swiftly, but are not very strong. Some even explode while they're attacking.



### Elephant

A secondary Boss in the warp zone. Strong life energy and attacking power. Appears at crucial points.

## Weapons



**Knife**  
Michael's original weapon. Minimal attacking power.



**Grenade**  
Explodes when thrown. Powerful enough to kill all enemies on the screen. Powerless to some monsters.



**Pistol**  
More attacking power than the knife. Can attack from a distance. Can fire one bullet at a time.



**Restored Laser**  
Separated into ten parts. Every Boss from each warp zone has one of the parts. Only this weapon, when completely assembled, can kill the ultimate monster CANBARIAN.



**Machine Gun**  
More attacking power than the pistol. Can fire successively. Be careful not to use all the bullets too quickly.



**Vitamin**  
Not a weapon. Energy enhancer. Three different kinds (Red, Blue, Yellow).

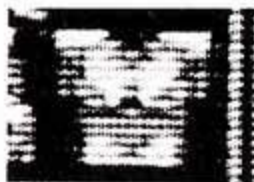
## Items (Warp Zone)

Secret machines invented by Dr. Chaos  
You can only use them in the warp zone.



### Jump Boots

With these boots on, Michael can jump high in the warp zone. Sometimes you can't get to the end of the warp zone without these boots.



### Shield Suit

Protects Michael from attacking monsters.



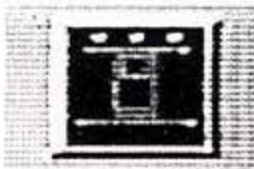
### Air Helmet

Michael needs this helmet to protect him in the water in the warp zone. His life power diminishes rapidly without this helmet.



### Parts Bottle

A container to hold the ten different parts of the Restored Laser.



### Ultraspace Sensor

Activates when it approaches the entrance of the warp zone. Without this, Michael won't be able to enter any of the warp zones.

## Extra Hints

In order to rescue Dr. Ginn Chaos and save the world, Michael has to find eleven different warp zones, and destroy eleven big monsters. On his way, he has to face many different kinds of monsters. Here's some advice for you.

- **Look for the ultraspace sensor first.**

You can't enter other warp zones without the ultraspace sensor. Find this sensor first. Then look for other warp zones.

- **Doors are not the only entrances to the rooms.**

In some cases, you might be able to move from one room to another by penetrating the wall. Give it a shot and knock on the wall.

---

## Password & Notes

## **Compliance with FCC Regulations**

This equipment generates and uses radio frequency energy and if not installed and used properly, that is, in strict accordance with the manufacturer's instructions, may cause interference to radio and television reception. It has been type tested and found to comply with the limits for a Class B computing device in accordance with the specifications in Subpart J of Part 15 of FCC Rules, which are designed to provide reasonable protection against such interference in a residential installation. However, there is no guarantee that interference will not occur in a particular installation. If this equipment does cause interference to radio or television reception, which can be determined by turning the equipment off and on, the user is encouraged to try to correct the interference by one or more of the following measures:

- Reorient the receiving antenna
- Relocate the NES with respect to the receiver
- Move the NES away from the receiver
- Plug the NES into a different outlet so computer and receiver are on different circuits.

If necessary, the user should consult the dealer or an experienced radio/television technician for additional suggestions. The user may find the following booklet prepared by the Federal Communications Commission helpful:

*How to Identify and Resolve Radio-TV interference problems.* This booklet is available from the U.S. Government Printing Office, Washington, D.C. 20402, stock No. 004-000-00345-4.



## **90-Day Limited Warranty FCI Game Paks**

### **90-Day Limited Warranty:**

Fujisankei Communications International, Inc. (FCI) warrants to the original consumer purchaser that this FCI Game Pak ("PAK") (not including Game Pak Accessories or Robot Accessories) shall be free from defects in material and workmanship for a period of 90 days from date of purchase. If defect covered by this warranty occurs during this 90-day warranty period, FCI will repair or replace the PAK, at its option, free of charge.

To receive this warranty service:

1. DO NOT return your defective Game Pak to the retailer.
2. Notify the FCI Consumer Service Department of the problem requiring warranty service by calling: Outside New York State (800) 255 1431 or New York State (212) 753 8100. Our Consumer Service Department is in operation from 9:30 A.M. to 5:30 P.M. Eastern Time, Monday through Friday.
3. If the FCI service technician is unable to solve the problem by phone, he will provide you with a Return Authorization number. Simply record this number on the outside packing of your defective PAK, and return your PAK freight prepaid, at your risk of damage, together with your sales slip or similar proof-of-purchase within the 90-day warranty period to:

Fujisankei Communications International, Inc.  
150 East 52 Street, New York, N.Y. 10022

This warranty shall not apply if the PAK has been damaged by negligence, accident, unreasonable use, modification, tampering, or by other unrelated causes to defective materials or workmanship.

**Warranty Limitations:**

ANY APPLICABLE IMPLIED WARRANTIES, INCLUDING WARRANTIES OF MERCHANTABILITY AND FITNESS FOR A PARTICULAR PURPOSE, ARE HEREBY LIMITED TO NINETY DAYS FROM THE DATE OF PURCHASE AND ARE SUBJECT TO THE CONDITIONS SET FORTH HEREIN. IN NO EVENT SHALL FCI BE LIABLE FOR CONSEQUENTIAL OR INCIDENTAL DAMAGES RESULTING FROM THE BREACH OF ANY EXPRESS OR IMPLIED WARRANTIES.

The Provisions of this warranty are valid in the United States only. Some states do not allow limitations on how long an implied warranty lasts or exclusion of consequential or incidental damages, so the above limitations and exclusion may not apply to you. This warranty gives you specific legal rights, and you may also have other rights which vary from state to state.

## Look for these exciting video games

- 
- Ultima®** One of the most popular and best-selling games for PCs now available from FCI. Fight the evil Exodus with assumed identities and magic powers. The ultimate role playing fantasy game.
- 
- Zanac™** Twelve screens of flying space creatures oppose Zanac as he fights to rescue the human race from destruction. Speed and strategy change as you improve.
- 
- Lunar Pool™** Play sixty different tables to become the pool hustler of outer space. Challenge yourself, the computer or another player. Different from anything on earth.
- 
- Seicross®** Race your space bike against swift pursuers, blaze your way through hidden enemy cannons, use your laser beam to destroy the formidable enemy Bultank.
- 
- MagMax™** Transform into a master robot with body parts and weapons found at the core of the planet. Each part gives MagMax more power to destroy the three-headed space monster.
- 
- Hydride™** With a sword of power, our warrior hero must master five magic realms and find ten treasures to fight the monsters and rescue the captive princess.
- 


Zanac and Lunar Pool are trademarks of Fujisankei Communications International, Inc. and are licensed for play on the Nintendo Entertainment System.® Ultima is a trademark of Richard Garriott. MagMax and Seicross are trademarks of Nihon Bussan Co., Ltd. Hydride is a trademark of T&Esoft.

---

**FCI** 

Licensed by Nintendo  
for play on the

**Nintendo**  
ENTERTAINMENT  
SYSTEM®

©1988 FCI /PONY CANYON